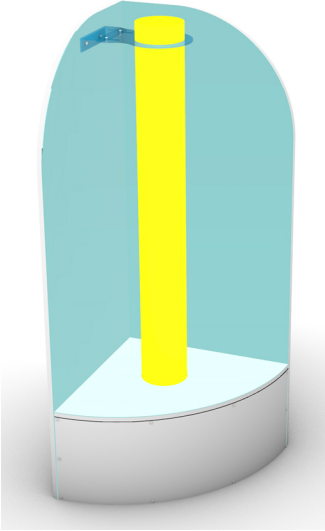


Installation Manual for Right-Angle Combination Mirror for Sensory Integration Use



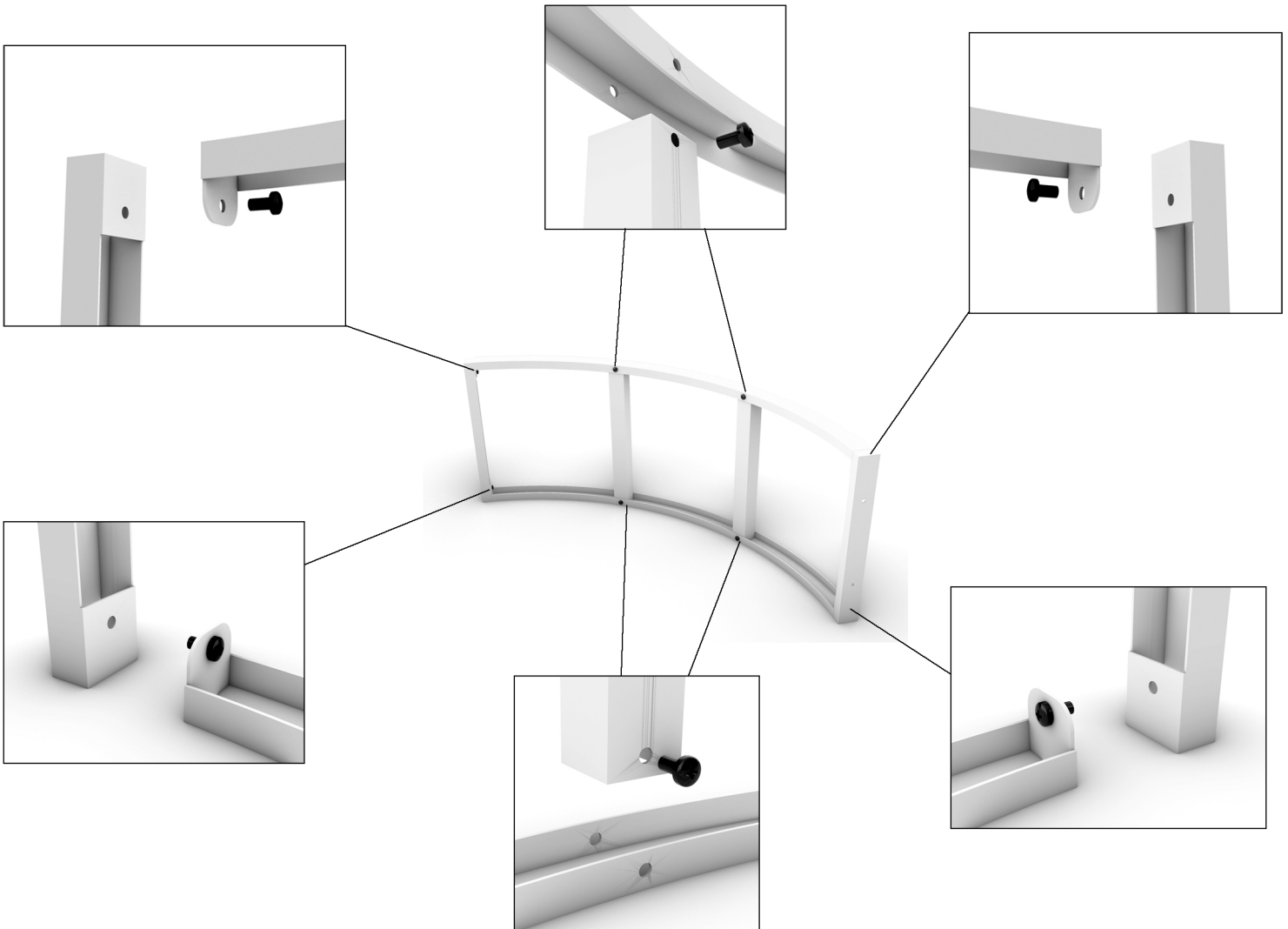
Visual Effect After Installation

This circular mirror assembly is primarily designed to be used with a 1.5-meter-high water column lamp or light pillar. The product is fully modular and requires assembly. For optimal and efficient installation, it is recommended to have two people assemble the product simultaneously using a power screwdriver.

The product includes:

- 1 wooden fan-shaped mirror cover
- 2 mirror side panels (size: 60x150cm)
- 1 set of hardware structure for the fan-shaped outer side
- 1 acrylic protective panel
- 1 adjustable 15cm stand
- 1 set of screws and assembly components

Step 1: Assemble the metal support frame.



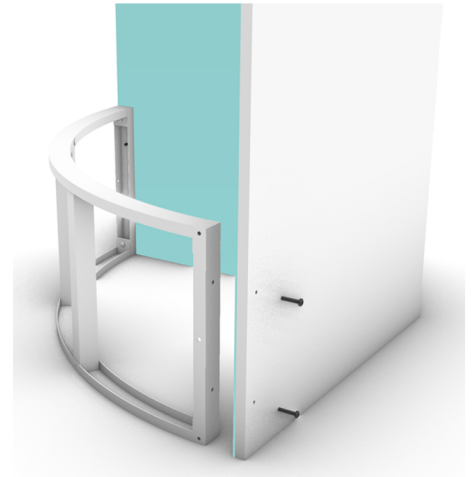
Step 2: Assemble the right-angle mirrors with metal frame



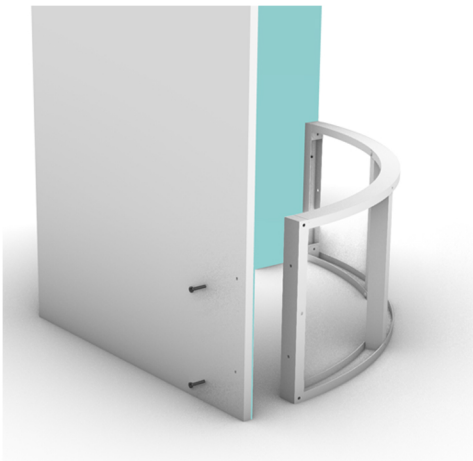
Step 2-1: Stand the two right-angle mirror panels upright and secure them with screws according to the diagram. Two people are required for this step.



After completing Step 2, the structure should look as shown. Please ensure all screws are firmly tightened.



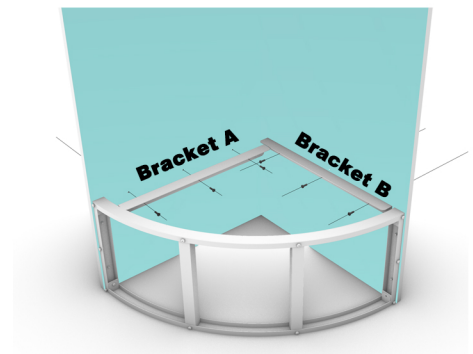
Step 2-2: Attach the pre-assembled metal frame (with fishing line) to the mirror panels using screws. Refer to the image for the left-side installation example.



Step 2-2: Attach the pre-assembled metal frame (with fishing line) to the mirror panels using screws. Refer to the image for the left-side installation example.

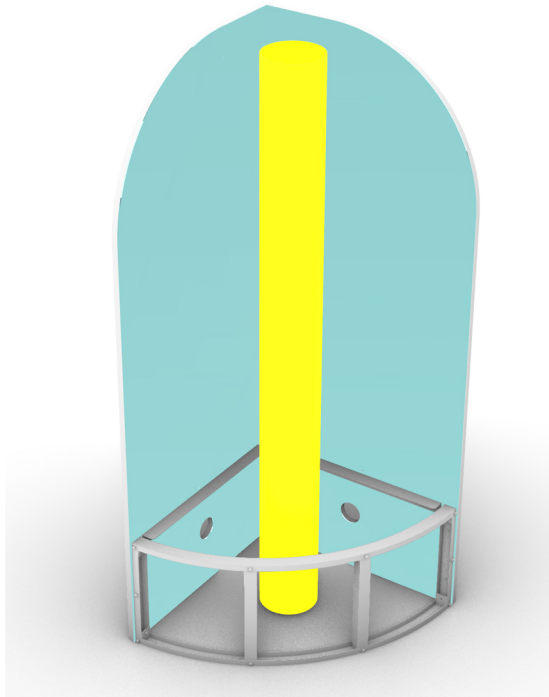


Final Installation View: The image shows the fully assembled unit. Please ensure that the two mirror panels are aligned at a precise 90-degree right angle.

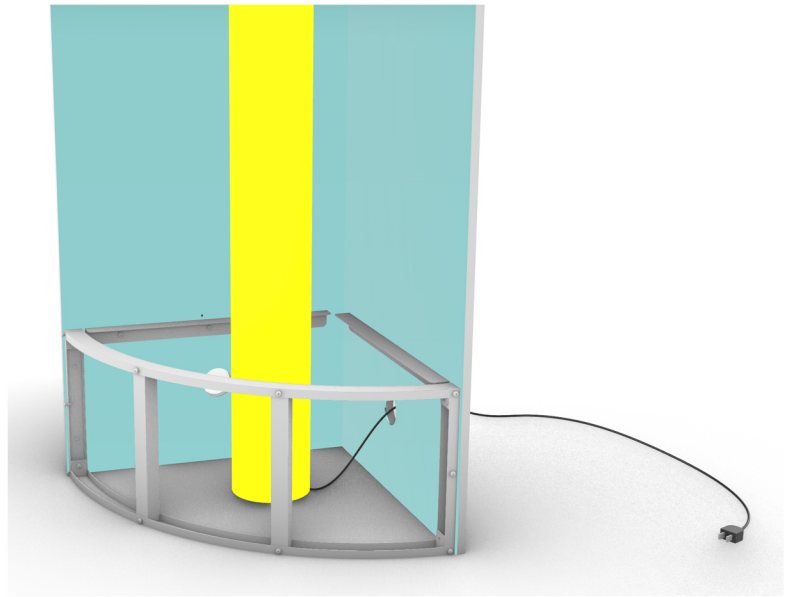


Step 2-3: Take out the final two metal brackets, A and B. Use screws to secure them to the mirror panels, aligning them with the pre-drilled holes.

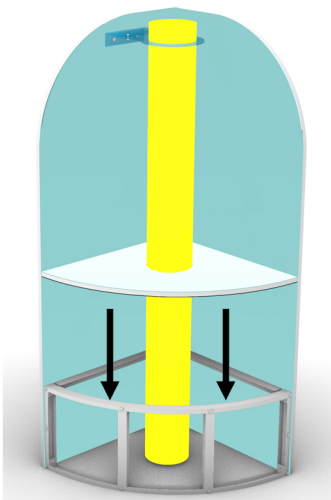
Step 3: Install bubble tube or light tube to the conner piece



Step 3-1: Place the light column or water column in the center position as shown in the diagram.



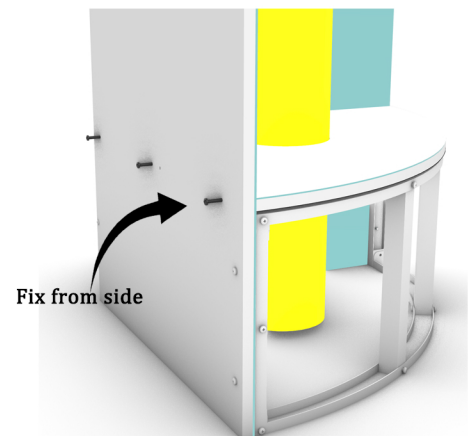
Step 3-2: Route all electrical wires or power cables through the designated openings on either the left or right side of the mirror panel, according to installation requirements.



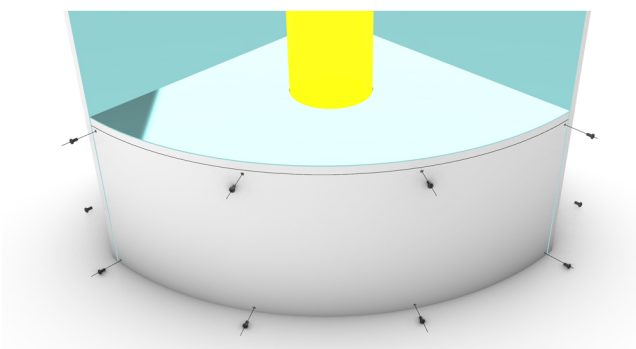
Step 3-3: Slide the base panel over the water column or light column, and position it onto the base as shown in the diagram.



Step 3-4: After adjusting the brackets, secure the light column in place according to the desired length and height. The bracket holes may need to be drilled using a power drill to match the required height.



Step 3-5: Following the diagram, fasten the fan-shaped base mirror panel to the side mirror panels using screws, ensuring they are tightly secured through the pre-drilled holes.



Final Step 11: Attach the acrylic base panel to the structure by securing it with screws, ensuring proper alignment with the designated holes.

Maintenance Manual for Right-Angle Combination Mirror

1. Regular Inspection

- **Mirrors:** Regularly inspect the mirror panels for any cracks or damages. Clean the surface with a soft, non-abrasive cloth to avoid scratching the mirror finish. Avoid using harsh chemicals or solvents that can damage the surface.
- **Brackets & Fasteners**:** Check the brackets, screws, and other fasteners for any loosening or corrosion. Tighten any loose screws using the appropriate tools. Ensure all components remain securely fixed.

2. Cleaning Instructions

- **Mirror Surface:** Use a soft microfiber cloth dampened with water or a mild glass cleaner to clean the mirror panels. Do not use paper towels or rough materials, as they can scratch the surface.
- **Base & Acrylic Panel:** Wipe the acrylic base panel with a soft cloth to maintain its clarity. Avoid using alcohol or ammonia-based cleaning products on acrylic materials, as they can cause discoloration or cracking.
- **Electrical Components**:** Ensure that the electrical components (e.g., wires, power cables) are kept dry and free of dust. Use a dry, soft cloth to wipe them gently.

3. Electrical System Maintenance

- **Power Cables & Connections:** Inspect the power cables for any visible signs of wear, cuts, or exposure. Ensure that all connections are properly secured and no wires are exposed.
- **Light Column or Water Column**:** If the light column or water column is used, check that it is functioning correctly. Ensure that the wiring is intact and that the components are securely mounted to avoid any malfunction or accidents.

4. Structural Stability

- **Bracket & Panel Tightness:** Periodically check that all brackets and panels are securely fastened, particularly after moving or adjusting the installation. Ensure that the mirror panels are still aligned at a precise 90-degree angle.
- **Height & Length Adjustments**:** Verify that the height and length of the light or water column are still correctly adjusted according to the desired positioning. Tighten any adjustable parts as needed.

5. Troubleshooting

- **Loose Panels:** If you notice that the panels are loosening or becoming misaligned, carefully check the screws and fasteners, ensuring they are tightened properly.
- **Electrical Issues:** If the light or water column fails to function properly, check the power supply and connections. If necessary, replace any faulty parts or consult a qualified technician for assistance.

6. Safety Tips

- **Avoid Overloading:** Do not exceed the recommended weight limits for the light column or water column installation. Ensure that all components are securely fastened to prevent accidents.
- **Electrical Safety:** Always disconnect the power supply when performing maintenance or inspections involving electrical components.

7. Annual Inspection

- It is recommended to perform a thorough inspection of the entire unit once a year. This includes checking the structural integrity, electrical components, and cleaning the mirrors and acrylic base panel. Replacing worn or damaged parts will help extend the product's lifespan.